

3-D DISNEY CRUISE SHIP



ASSEMBLY INSTRUCTIONS

Time to complete: Approximately 30 minutes

Level: Medium

GETTING STARTED

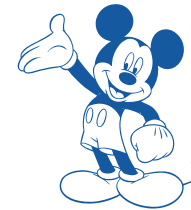
MATERIALS:

- Metal-edged ruler
- Butter knife
- Scissors or craft knife
- Cutting mat (optional)
- Multipurpose glue

- 1** Score all the pieces: Using a ruler as a guide, run the back side of a butter knife firmly along all dotted lines.



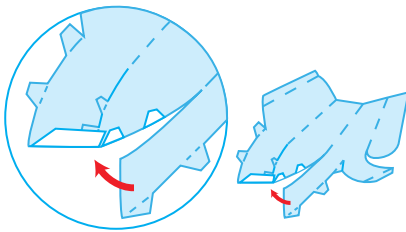
- 2** Using scissors or a craft knife and cutting mat, cut out all pieces along solid lines.



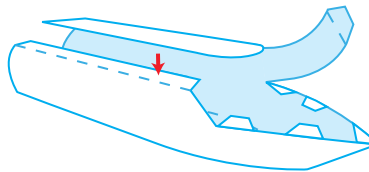
Hey Kids!
Make sure to ask an adult for help.

ASSEMBLE YOUR SHIP

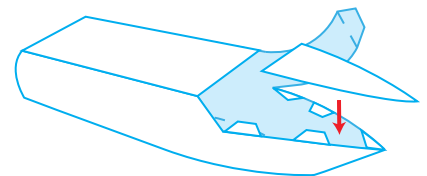
- 3** Fold sides of boat upward and glue tabs at the front of boat in place.



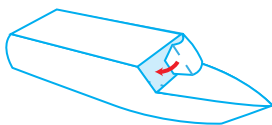
- 4** Fold top panel down and glue to tab.



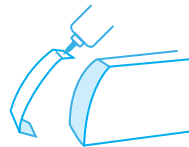
- 5** Glue deck piece onto front of boat.



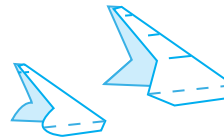
- 6** Fold front panel over to opposite side of boat and glue tab to inside of boat.



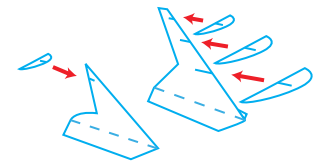
- 7** Apply glue to tabs on the back panel and affix to inside edges at end of boat.



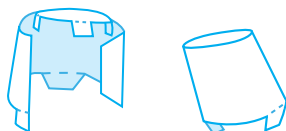
- 8** Fold front tower in half and glue together. Repeat with rear tower.



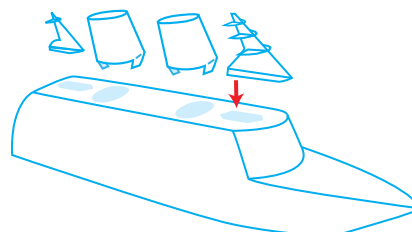
- 9** Insert front and rear tower wings into slits on each tower.



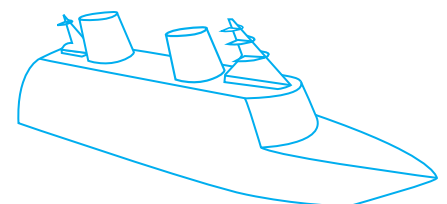
- 10** Wrap chimney panel around and glue ends together. Glue top tabs in place. Repeat with second chimney.



- 11** Apply glue to bottom tabs on chimneys and towers, and affix to top of boat.

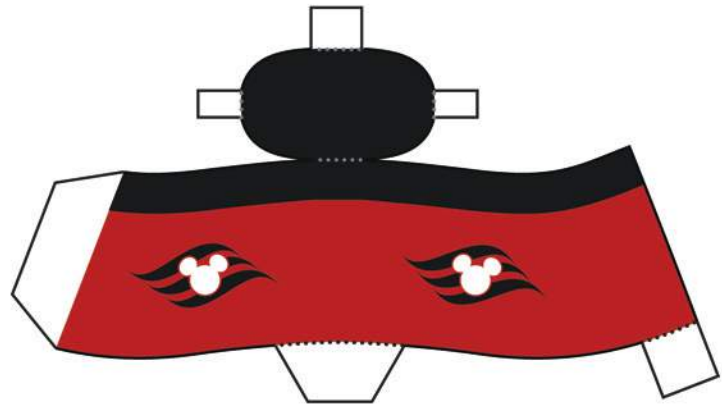


- 12** You're done!

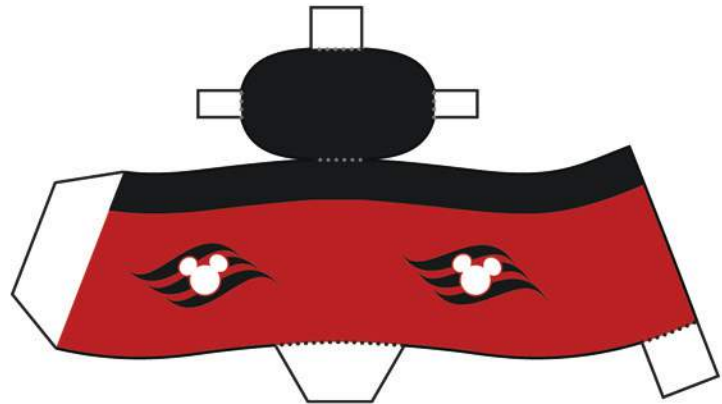




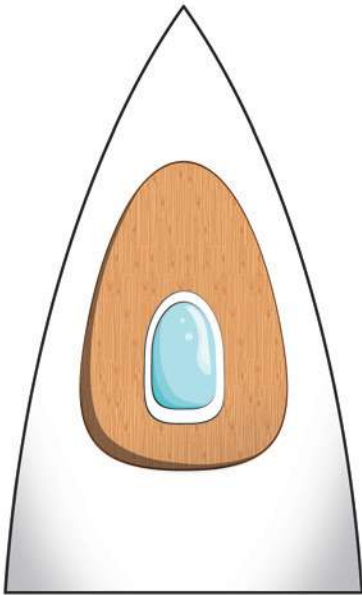
BACK



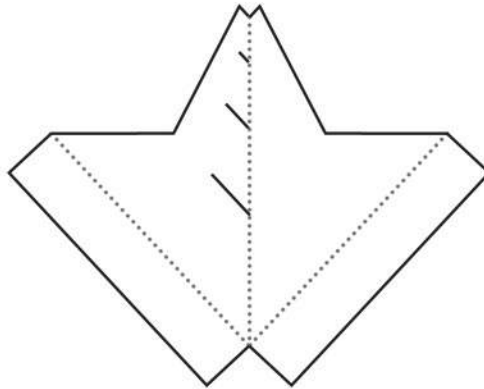
CHIMNEY



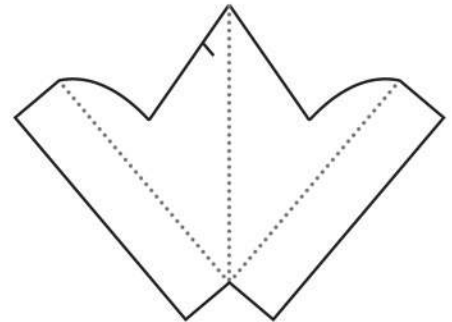
CHIMNEY



DECK



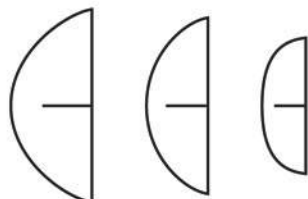
FRONT TOWER



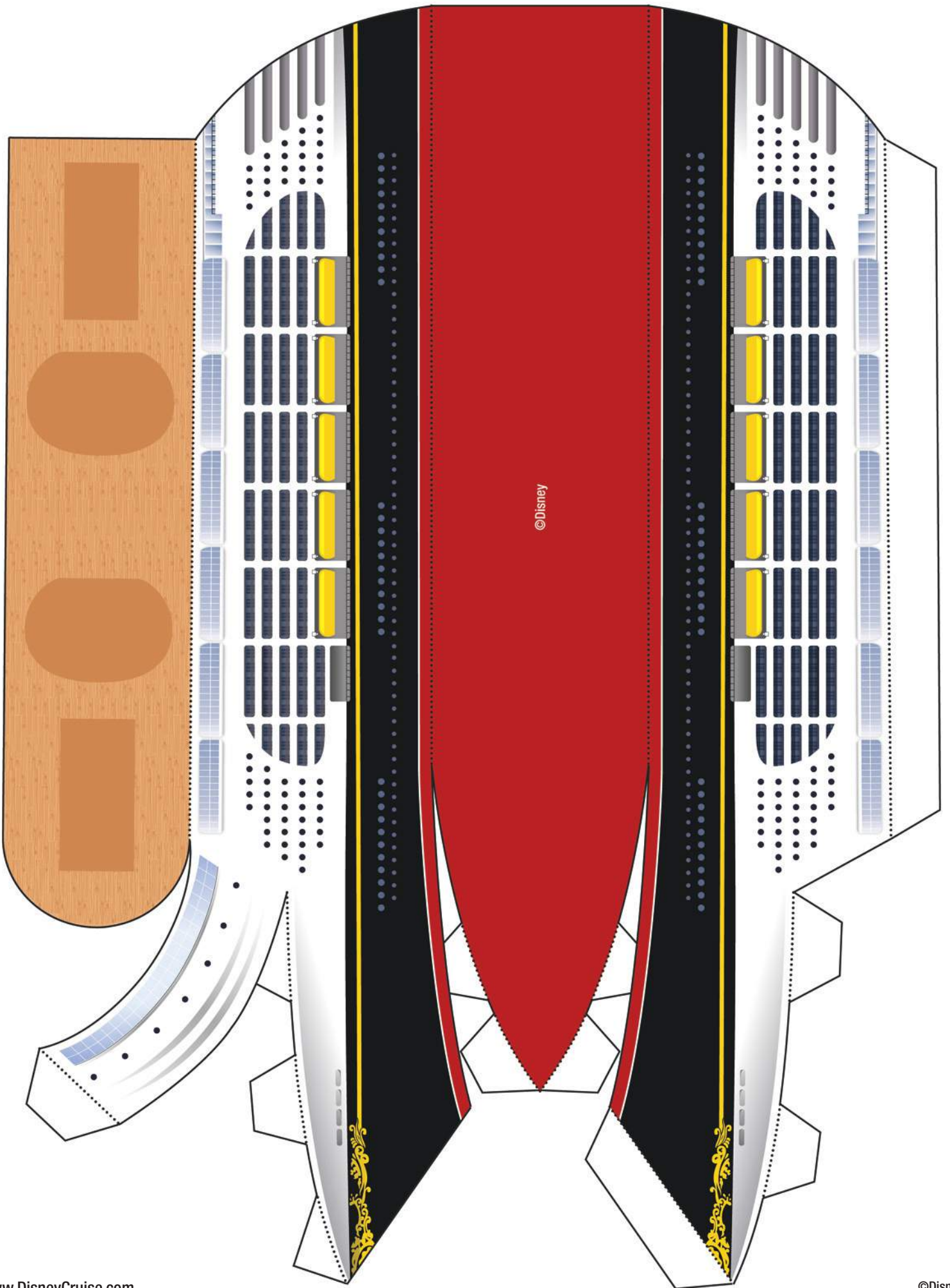
REAR TOWER



REAR TOWER WING



FRONT TOWER WINGS



3-D CASTAWAY CAY DIORAMA



Disney
CRUISE LINE



ASSEMBLY INSTRUCTIONS

Time to complete: Approximately 20 minutes

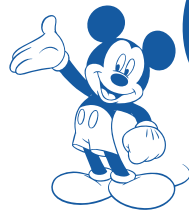
Level: Easy

GETTING STARTED

MATERIALS:

- Metal-edged ruler
- Butter knife
- Scissors or craft knife
- Cutting mat (optional)
- Multipurpose glue

- 1** Be sure to follow the printing instructions for double-sided printing when you download your artwork.



Hey Kids!
Make sure to ask an adult for help.

- 2** Score all the pieces: Using a ruler as a guide, run the back side of a butter knife firmly along dashed and dotted lines.

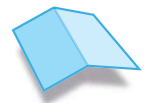


- 3** Using scissors or a craft knife and cutting mat, cut out pieces along solid lines.



- 4** Fold all pieces along score lines, using the folding key below as a reference.

Mountain Fold

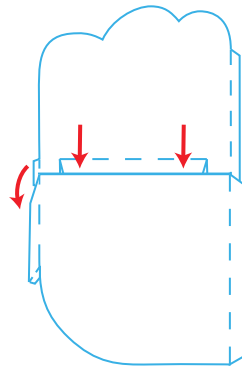


Valley Fold

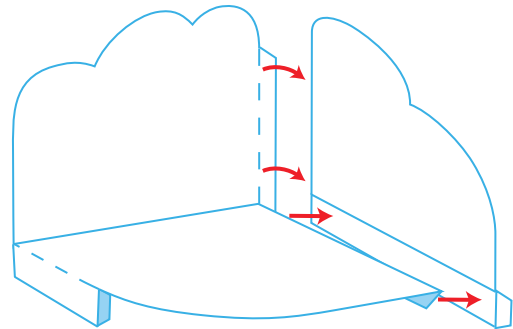


ASSEMBLE THE DIORAMA

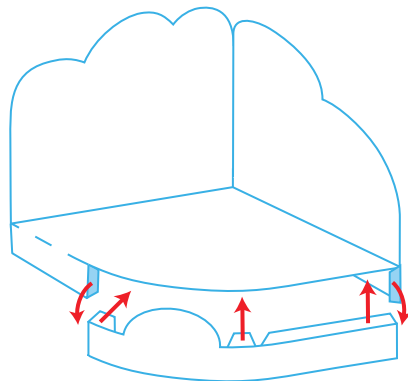
- 5** Glue front tab on panel A to underside of panel B. Be sure to align artwork on both panels. Glue tab on left side of panel A to inside edge of tab on left side of panel B.



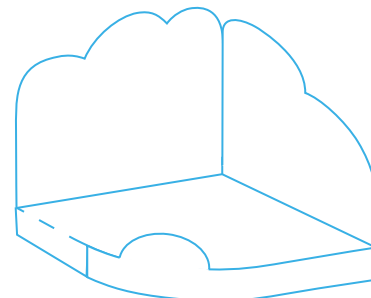
- 6** Glue tab on right side of panel A to back of panel C. Glue bottom of panel C to tab on right side of panel B. Be sure to align the artwork on all panels.

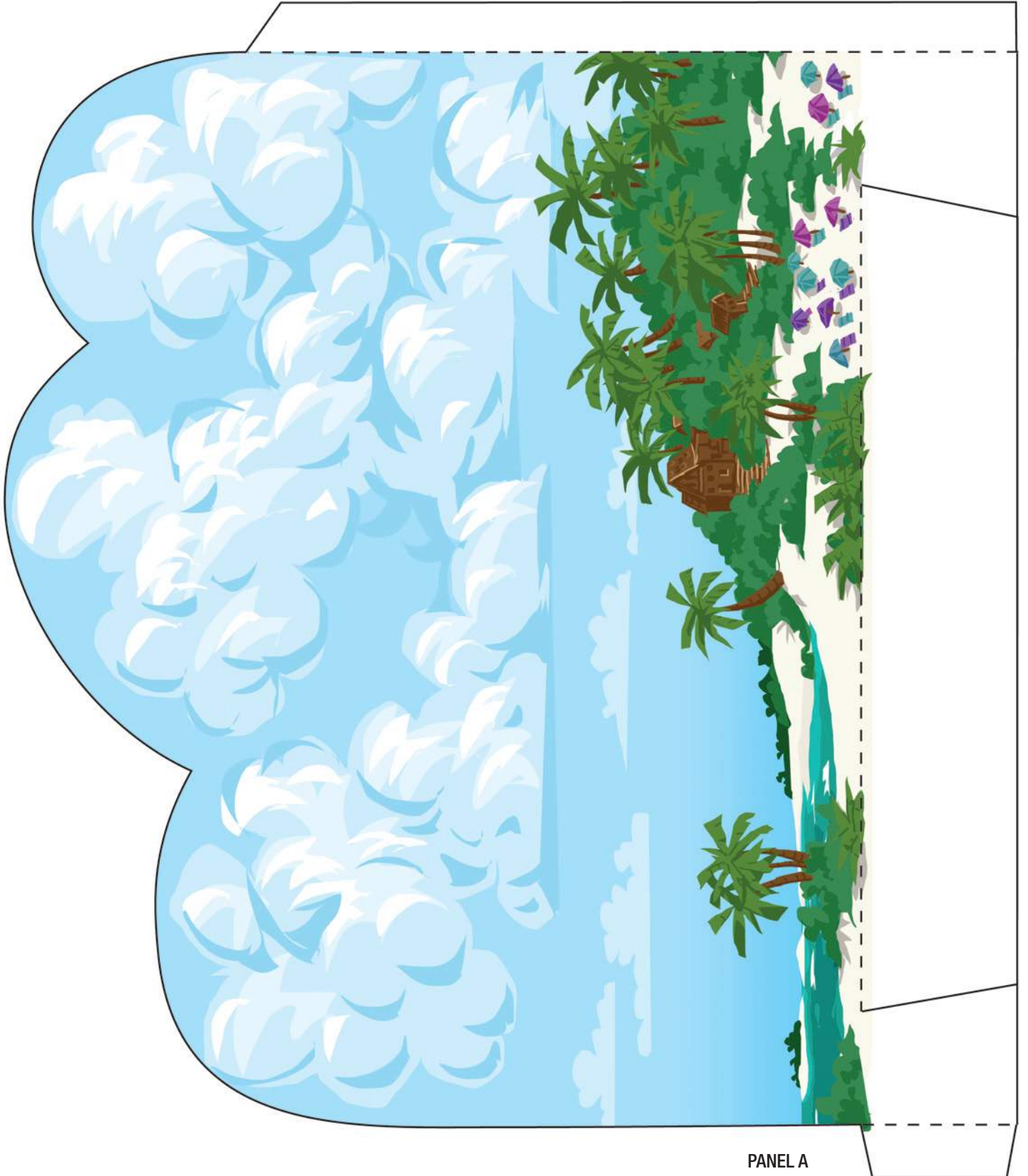


- 7** Glue tabs on panel D to underside of panel B. Glue remaining tabs on panels B and C to the ends of panel D.



- 8** You're done!



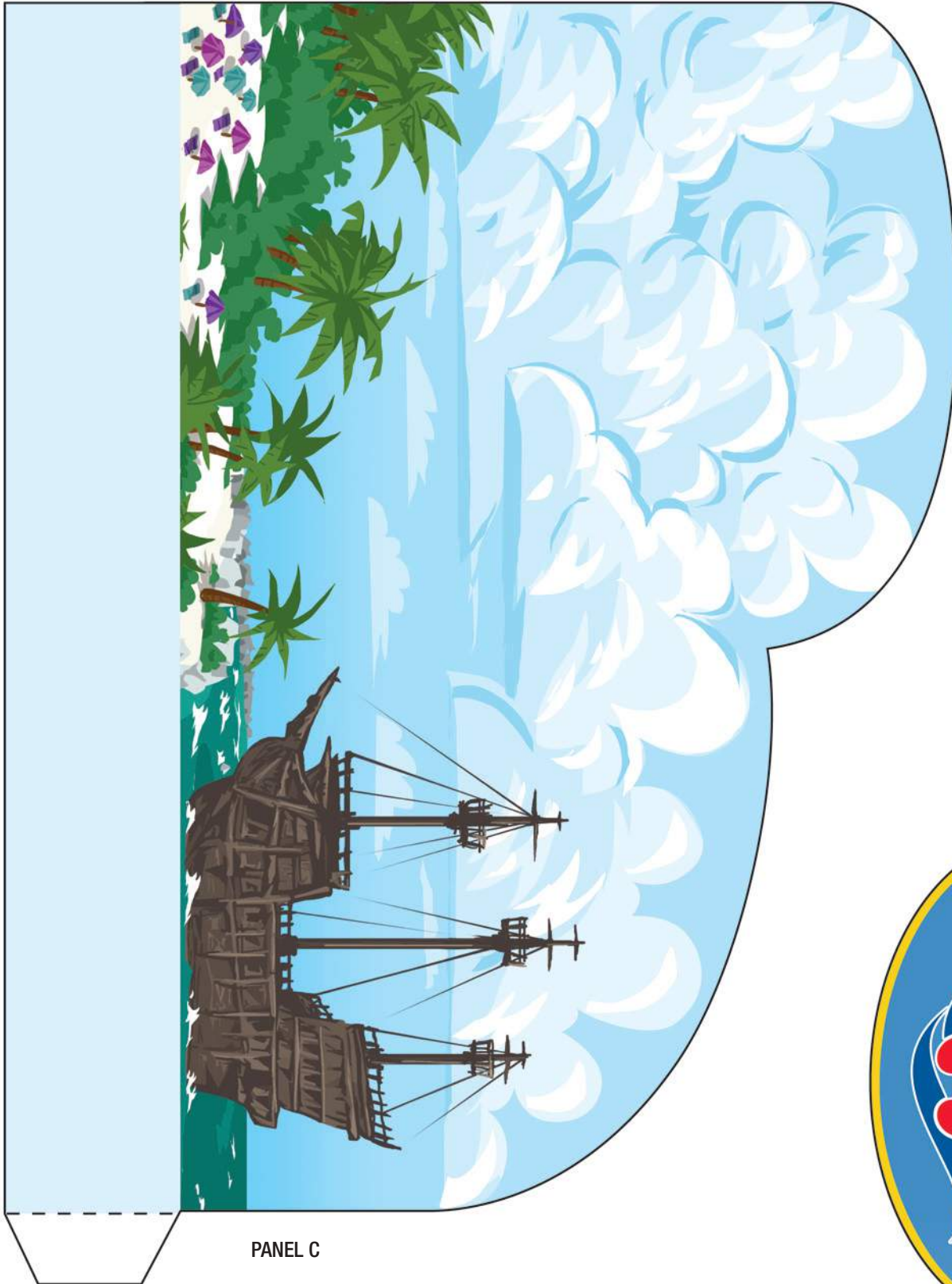


PANEL A

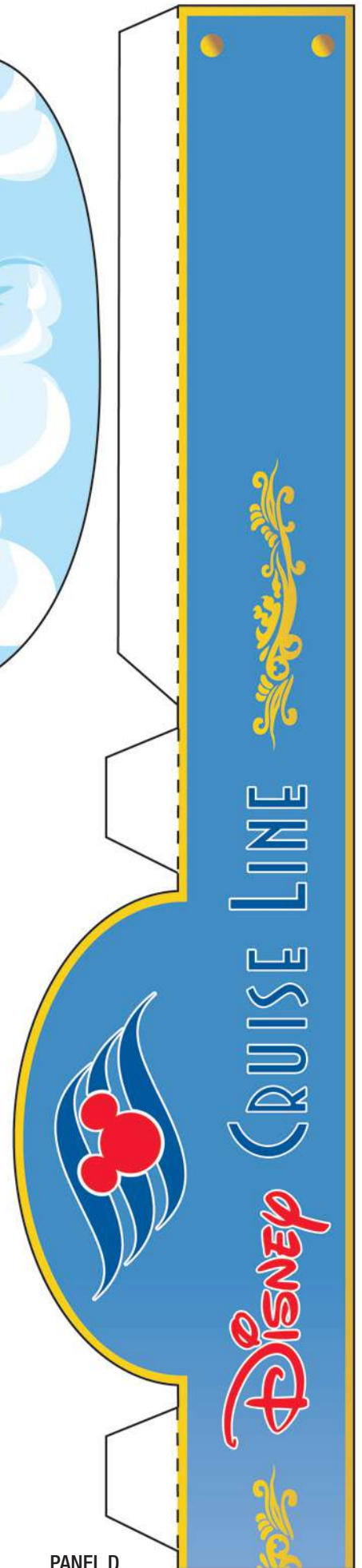


PANEL B





PANEL C



PANEL D